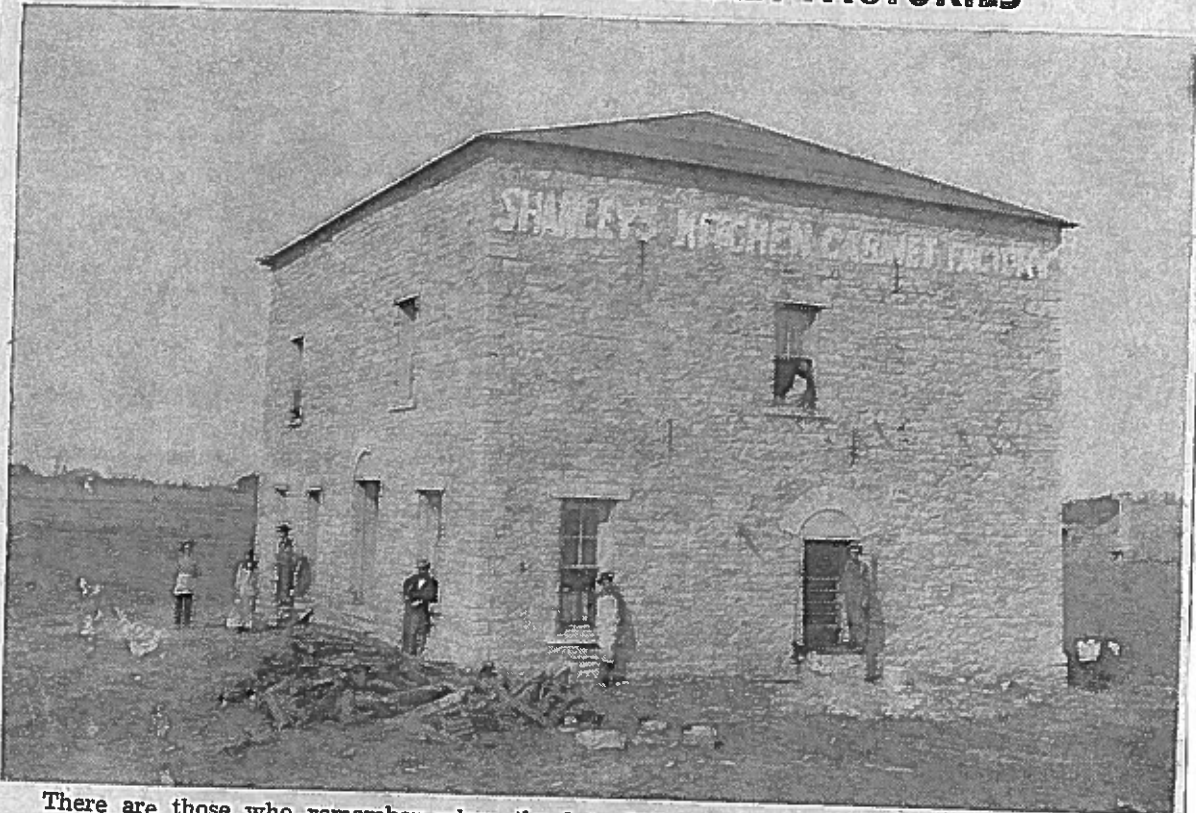


John Reichstetter Drug Store was located on the west side of square, in the building now occupied by Cherry Drug. That seems to have been the favorite location because the Haralson Drug Store was in the same buildin.

ONE OF GRANBURY'S EARLY FACTORIES



There are those who remember when the late Mike Shanley operated the Shanley Kitchen Cabinet Factory. This building was also an opera house at one time. It is the home of Mr. Shanley's daughter, Mrs. Madeline Green, now and doesn't resemble the factory any more.